

Nextiva Review Quick Start Guide

Software Release 5.1

April 2008

IP Video Made Easy

Contents

- Chapter 1 ■ Overview 1**
 - Logging In and Out2
 - Presenting the Review Interface 4
- Chapter 2 ■ Viewing Live and Recorded Video 5**
 - Viewing Live Video 6
 - Performing a Quick Query on Live Video 7
 - Viewing Recorded Video 7
 - Exporting Video 9
 - Using Activity Scan 11
- Customer Service 13**

This document contains confidential and proprietary information of Verint Systems Inc. and is protected by copyright laws and related international treaties. Unauthorized use, duplication, disclosure or modification of this document in whole or in part without the written consent of Verint Systems Inc. is strictly prohibited.

By providing this document, Verint Systems Inc. is not making any representations regarding the correctness or completeness of its contents and reserves the right to alter this document at any time without notice.

All marks referenced herein with the ® or TM symbol are registered trademarks or trademarks of Verint Systems Inc. or its subsidiaries. All rights reserved. All other marks are trademarks of their respective owners.

© 2008 Verint Systems Inc. All rights reserved.

www.verint.com/videosolutions

Publication date: April 25, 2008

1

Overview

The *Nextiva Review Quick Start Guide* is designed to help operators get started using the Nextiva® Review application.

Review is a high-tech solution for viewing live surveillance video. Review is also used to retrieve recorded video from a recorder or storage device, including video recorded during an alarm event. This application also provides several features for enhancing surveillance video, scanning for activity, and exporting video to a workstation drive or writable CD.

This section contains the following information:

- Logging in and out of the application
- Overview of the application interface

Press **<F1>** in Review to activate contextual help, or refer to the *Nextiva Review Operator Guide* for detailed instructions.

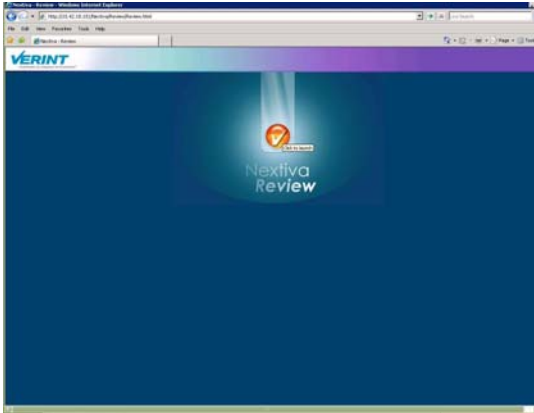
Logging In and Out


Nextiva Review is launched using a Web browser, with the Review URL and the IP address 10.42.18.101.

To run Nextiva Review for the first time:

1. Open Internet Explorer (version 6.x or higher), and enter the following in the Address bar:

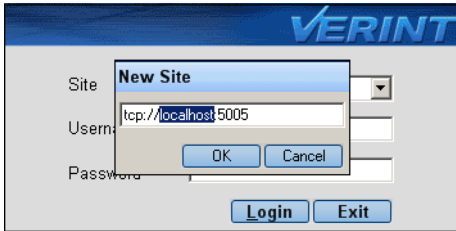
http://10.42.18.101/Nextiva/Review/Review.html



2. Add this page to your Internet Explorer favorites. Create a desktop link from that favorite.
3. Click the **Launch** button  to launch the application. A login dialog box opens.



4. Click the **Site** drop-down list, then select **New Site**. The New Site dialog box opens.



5. Replace the *localhost* name with the IP address 10.42.18.101, then click **OK**.

Note: Be sure to leave the :5005 at the end of the connection line.

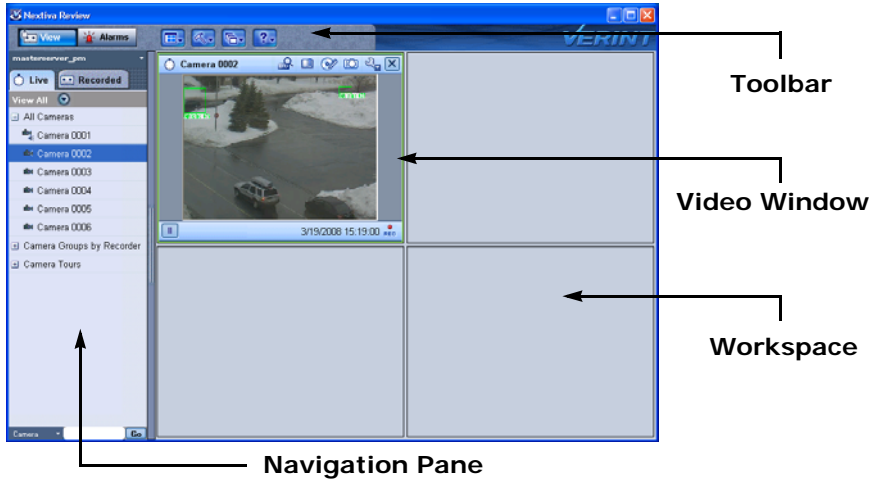
6. Enter **Administrator** for the user name and **cctvware** (case sensitive) as the password.
7. Click **Login** or press **<Enter>**. System information is displayed in the workspace and Nextiva Review begins if the login was successful.
8. Ensure that the CAPS key is on/off if a system alert appears, then try again.

To log out:

1. Click the **Close** button  in the upper-right corner of the application window.

Presenting the Review Interface

The following screenshot illustrates the Nextiva Review graphical user interface:



The application is divided into the three main sections:

- **Toolbar**—The toolbar contains the buttons used to access the most commonly-used commands in the Review application. Press **<F1>** for contextual help to view detailed information about each button.
- **Navigation Pane**—The navigation pane contains the Live and Recorded tabs used to access video from cameras connected to Nextiva, and the various features of the application for live and recorded video.
- **Workspace**—The workspace area can accommodate up to 16 video windows that display live or recorded video from selected cameras.

2

Viewing Live and Recorded Video

Nextiva Review is used to view live video or retrieve recorded video, which is displayed in a video window when you select a camera. Review also contains several video features that make it easier to navigate through video clips.

This section contains the following information:

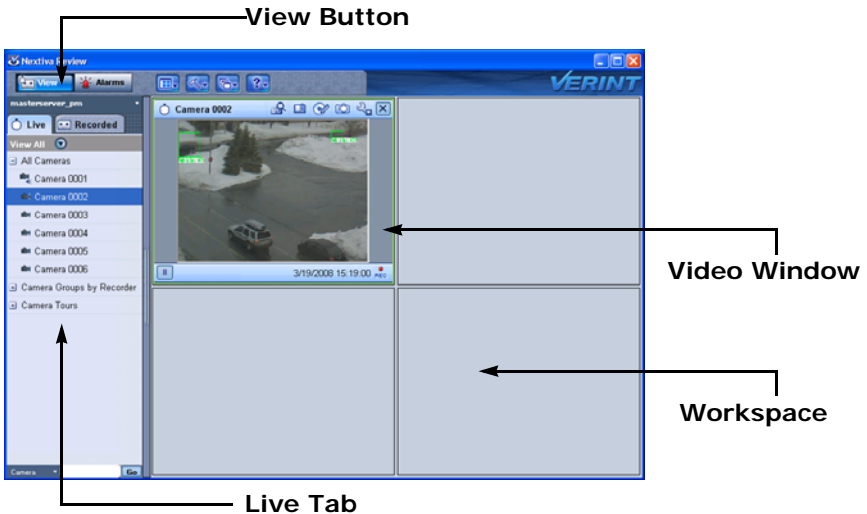
- Viewing live and recorded video in the workspace
- Performing quick queries on live video
- Exporting video to a local or network drive, or a compact disc
- Using the activity scan on recorded video

Viewing Live Video

Operators use Review to monitor real-time video images from surveillance cameras. Live video is displayed in the video window, which loads in the workspace once the required camera is selected from the Live tab.

To view live video:

1. Click the **View** button in the toolbar and select the **Live** tab from the navigation pane.
2. Double-click the required camera from the camera tree, or drag it into the workspace.



The video window begins playing the live video images from the selected camera.

3. Press **<F1>** in the Review application for detailed information about viewing live video.

Performing a Quick Query on Live Video


Operators perform quick queries while live video is playing to replay the previous five minutes of a live video feed.

To run a quick query:

1. Click the **Quick Query** button  in the live video window of your choice.



The quick query begins to play the previous five minutes of recorded video from the selected camera in the video window.

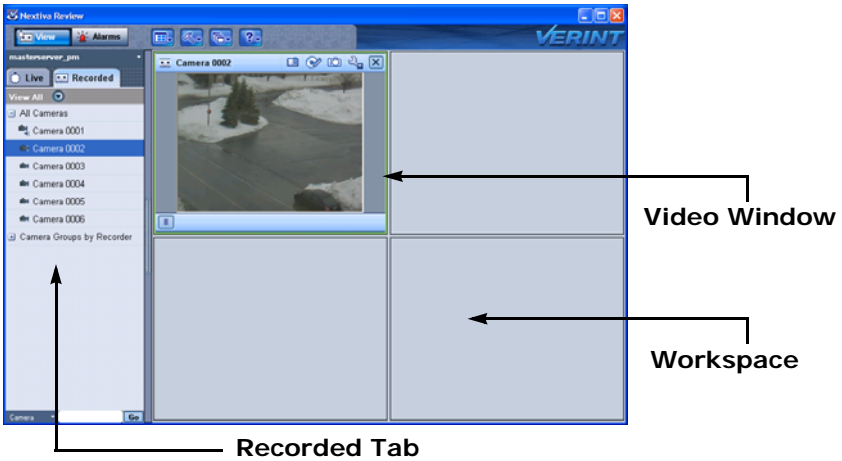
2. Click the **Tools** button  in the video window and select **Play Live** to return to live video once the quick query stops playing.

Viewing Recorded Video

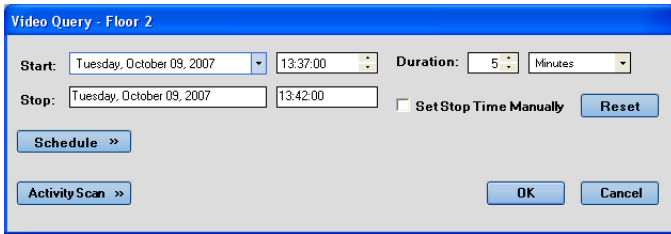
Operators can retrieve recorded video from surveillance cameras. Recorded video is displayed in the video window, which loads in the workspace once the user requests a specific date and time duration from the required camera.

To view recorded video:

1. Select the **Recorded** tab in the navigation pane.
2. Double-click the required camera from the camera tree, or drag it into the workspace.

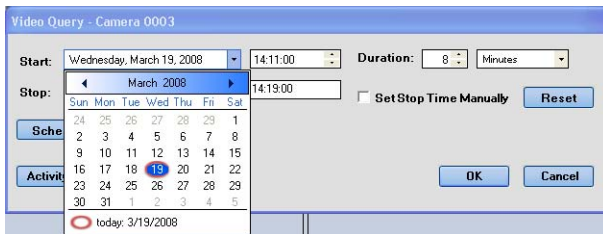


The Video Query dialog box opens.



The first time you perform a video query, the system displays the current date and time by default. The default duration time is 5 minutes.

3. Click the date drop-down arrow to open a calendar and select the required start date.



4. Select the length of the video (in minutes or hours) you want to retrieve in the **Duration** text box. The Stop time is automatically set, based on the selected length of time.

5. Select **Set Stop Time Manually** if you want to set the stop date and time manually.

Note: The Duration text boxes are unavailable when this option is selected.

6. Click **OK**.


The video window begins playing the recorded video images from the selected camera.

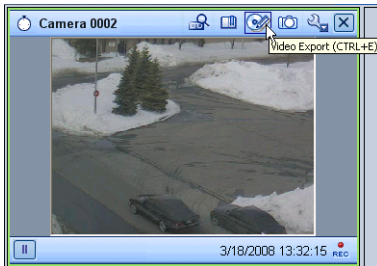
7. Press **<F1>** in the Review application for detailed information about recorded video.

Exporting Video

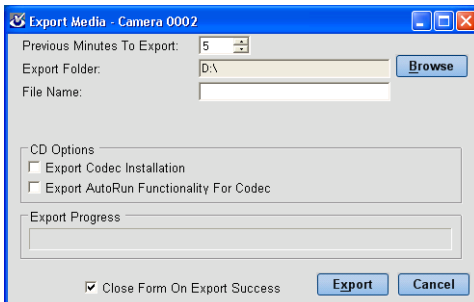
Operators use Review to export video to a local or mapped drive, or to a writable CD.

To export video:

1. Select the video window in the workspace that is displaying the video you wish to export and click the **Video Export** button .



The Export Media dialog box opens.



2. Select the duration (in minutes) of previously-viewed live video that you wish to export from the **Previous Minutes to Export** list.

The application exports the video to the drive where the application is installed by default.

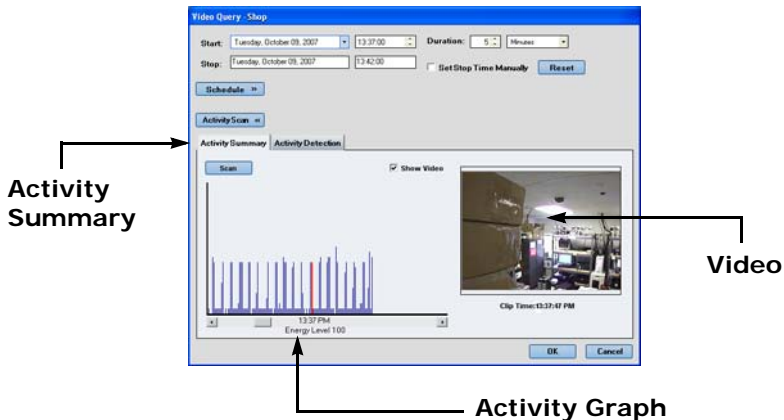
3. Click **Browse** to change the export location. A Browse for Folder dialog box opens.
4. Navigate to the directory where you want to export the video.
5. Enter a title for the file in the **File Name** text box.
6. Insert a blank writable CD into your workstation's disc drive to export the video to CD.
7. Click **Export Codec Installation** to include the video codec program that is used by Windows Media Player to play video exported from Review.
8. Click **Export AutoRun Functionality For Codec** to have the codec installation run automatically when the disc is inserted into a workstation.
9. Click **Close Form on Export Success** if you want the dialog box to close when the export process is complete.
10. Click **Export**. A progress bar indicates the status of the process.

Using Activity Scan

Operators scan recorded video to search for activity in a video view.

To scan recorded video for activity:

1. Click the **View** button and then select the **Recorded** tab in the navigation pane.
2. Double-click the required camera in the camera tree and then enter the query parameters for the recorded video in the Video Query dialog box.
3. Click **Activity Scan** to display the **Activity Summary** tab. The video you queried appears in a window on the right side of the tab.



4. Click **Scan**. Review begins to scan the queried video and displays a graph showing spikes in activity areas.
5. Click a spike on the graph to view the time of the activity, along with the level of activity.
6. Click **OK** to display the video in a video window when the scan is complete.
7. Press **<F1>** in the Review application for detailed information about scanning recorded video for activity.

Customer Service

For Verint services and support:

- The Verint Help Desk at 888-747-6246 is available 8 AM to 8 PM EST on business days.
- The Verint Partner Extranet provides instant access to FAQs, A&E specifications, promotional literature, and more. Go to vvs.verint.com to register or log in.
- For more information about Verint solutions and services, call 1-866-NEXTIVA or email us at videoinfo@verint.com.

VERINT
POWERING ACTIONABLE INTELLIGENCE®